

*RIPARTIZIONE NAZIONALE
PERSONALE DI SCORTA*

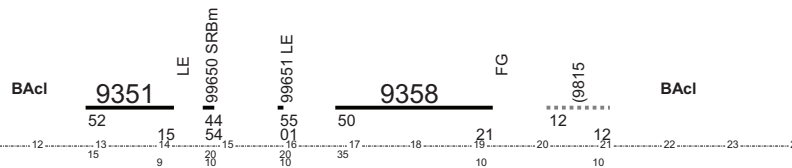
FRECCIARGENTO

11.DICEMBRE.2011
(Raccolta grafici)

CT

1

GA 79 GG 364
A 1 GG 364
[12:37][21:22]



Lav Sct Km Not
8:45 4:10 428 No

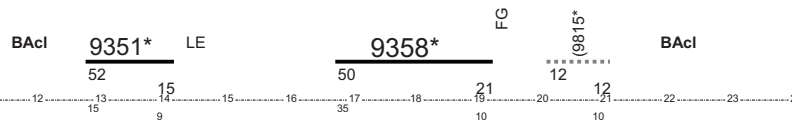
Materiali:



CST

2

GA 80 GG 364
A 1 GG 364
[12:37][21:22]



Lav Sct Km Not
8:45 3:54 421 No

Materiali:



CT

3

GA 81 GG 364
A 1 GG 364
[13:02][22:16]



Lav Sct Km Not
9:14 5:45 565 No

Materiali:



CST

4

GA 82 GG 364
A 1 GG 364
[13:02][22:16]



Lav Sct Km Not
9:14 5:45 565 No

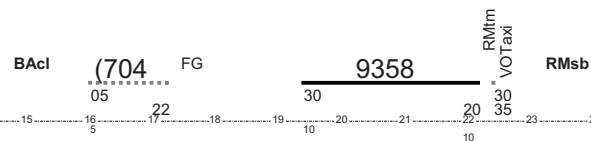
Materiali:



CT

5

GA 83 GG 364
A 1 GG 364
[16:00][22:30]



Lav Sct Km Not Rip
6:30 2:50 358 No 9:20

Lav Sct Km Not
4:58 4:03 480 No

Materiali:



Continuazione CT

6

GA 83 GG 364
A 1 GG 364
[8:10][13:08]



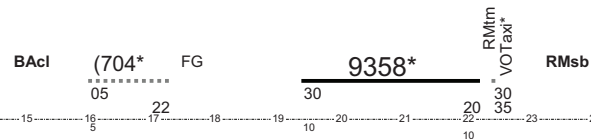
Materiali:



CT

7

GA 84 GG 364
A 1 GG 364
[16:00][22:30]



Lav Sct Km Not Rip
6:30 2:50 358 No 9:20

Lav Sct Km Not
4:58 4:03 480 No

Materiali:



Continuazione CT

8

GA 84 GG 364
A 1 GG 364
[8:10][13:08]

RMSb

V.O.*RMtm

9351*

BAcl



Materiali:

_____/_____/_____/_____

Lav Sct Km Not Rip
1:45 1:20 149 No 9:00

Lav Sct Km Not
5:03 1:27 153 No

Materiali:

_____/_____/_____/_____

CT

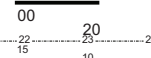
9

GA 85 GG 364
A 1 GG 364
[21:45][23:30]

BAcl

9357

LE



Continuazione CT

10

GA 85 GG 364
A 1 GG 364
[8:30][13:33]

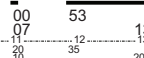
LE

V.O.*Taxi SRBm

99677 LE

9354

BAcl



Materiali:

_____/_____/_____/_____

Lav Sct Km Not Rip
4:32 1:37 156 Si 8:50

Lav Sct Km Not
2:26 1:20 149 No

Materiali:

_____/_____/_____/_____

CST

11

GA 86 GG 364
A 1 GG 364
[21:45][2:17]

BAcl

9357*

LE



SRBm

Continuazione

CST

12

GA 86 GG 364
A 1 GG 364
[11:07][13:33]

SRBm

99665 LE

9354*

BAcl



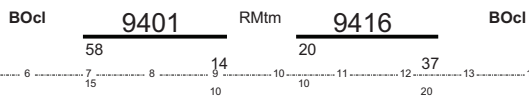
Materiali:

_____/_____/_____/_____

CT

1

GA 55 GG 364
A 1 GG 364
[6:43][12:57]



Lav Sct Km Not
6:14 4:33 705 No

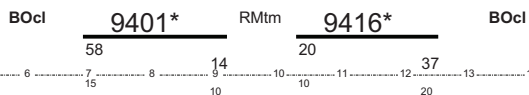
Materiali:

___/___/___/___

CST

2

GA 56 GG 364
A 1 GG 364
[6:43][12:57]



Lav Sct Km Not
6:14 4:33 705 No

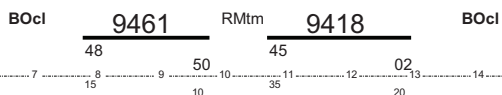
Materiali:

___/___/___/___

CT

3

GA 57 GG 364
A 1 GG 364
[7:33][13:22]



Lav Sct Km Not
5:49 4:19 703 No

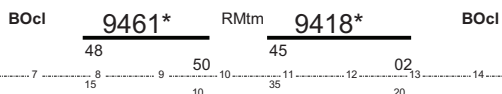
Materiali:

___/___/___/___

CST

4

GA 58 GG 364
A 1 GG 364
[7:33][13:22]



Lav Sct Km Not
5:49 4:19 703 No

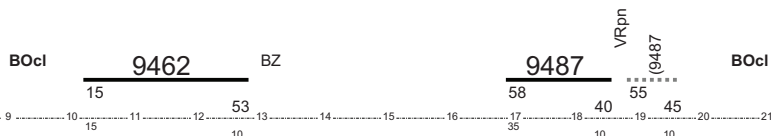
Materiali:

___/___/___/___

CT

5

GA 59 GG 364
A 1 GG 364
[10:00][19:55]



Lav Sct Km Not
9:55 4:20 408 No

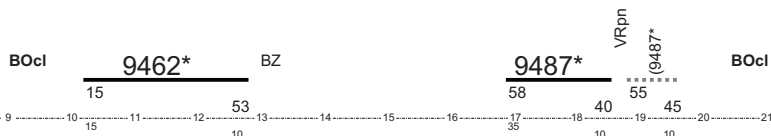
Materiali:

___/___/___/___

CST

6

GA 60 GG 364
A 1 GG 364
[10:00][19:55]



Lav Sct Km Not
9:55 4:20 408 No

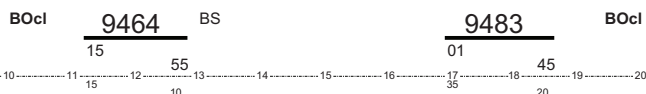
Materiali:

___/___/___/___

CT

7

GA 61 GG 364
A 1 GG 364
[11:00][19:05]



Lav Sct Km Not
8:05 3:24 359 No

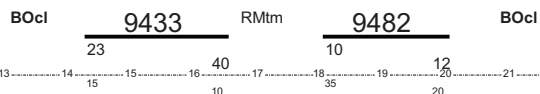
Materiali:

___/___/___/___

CT

15

GA 67 GG 364
A 1 GG 364
[14:08][20:32]



Lav Sct Km Not
6:24 4:19 703 No

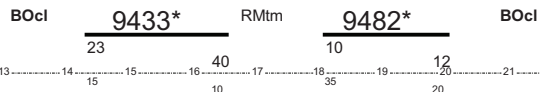
Materiali:

___/___/___/___

CST

16

GA 68 GG 364
A 1 GG 364
[14:08][20:32]



Lav Sct Km Not
6:24 4:19 703 No

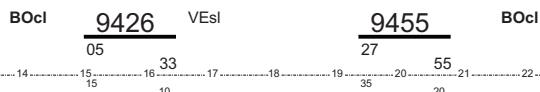
Materiali:

___/___/___/___

CT

17

GA 69 GG 364
A 1 GG 364
[14:50][21:15]



Lav Sct Km Not
6:25 2:56 319 No

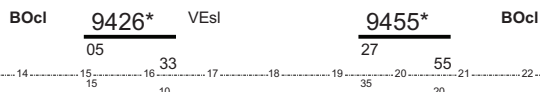
Materiali:

___/___/___/___

CST

18

GA 70 GG 364
A 1 GG 364
[14:50][21:15]



Lav Sct Km Not
6:25 2:56 319 No

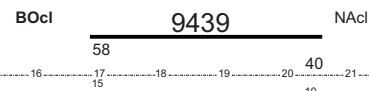
Materiali:

___/___/___/___

CT

19

GA 71 GG 364
A 1 GG 364
[16:43][20:50]



Lav Sct Km Not Rip
4:07 3:42 575 No 9:55

Lav Sct Km Not
4:37 3:42 575 No

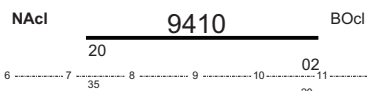
Materiali:

___/___/___/___

Continuazione CT

20

GA 71 GG 364
A 1 GG 364
[6:45][11:22]



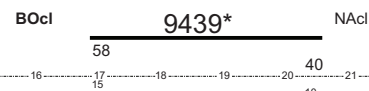
Materiali:

___/___/___/___

CST

21

GA 72 GG 364
A 1 GG 364
[16:43][20:50]



Lav Sct Km Not Rip
4:07 3:42 575 No 9:55

Lav Sct Km Not
4:37 3:42 575 No

Materiali:

___/___/___/___

Continuazione
CST

22

GA 72 GG 364
A 1 GG 364
[6:45][11:22]

NAcl 9410* BOcl
20 02
35 20

CT

23

GA 73 GG 364
A 1 GG 364
[18:50][22:18]

BOcl 9442 UD
05 08
15 10

Continuazione CT

24

GA 73 GG 364
A 1 GG 364
[5:15][9:15]

UD 9407 BOcl
50 55
35 20

CST

25

GA 74 GG 364
A 1 GG 364
[18:50][22:18]

BOcl 9442* UD
05 08
15 10

Continuazione
CST

26

GA 74 GG 364
A 1 GG 364
[5:15][9:15]

UD 9407* BOcl
50 55
35 20

Materiali:

Lav Sct Km Not Rip
3:28 3:03 278 No 6:57

Lav Sct Km Not
4:00 3:05 278 No

Materiali:

Materiali:

Lav Sct Km Not Rip
3:28 3:03 278 No 6:57

Lav Sct Km Not
4:00 3:05 278 No

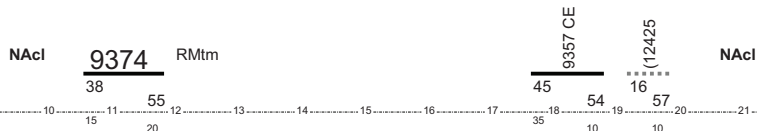
Materiali:

Materiali:

CT

1

GA 105 GG 364
A 1 GG 364
[10:23][20:07]



Lav Sct Km Not
9:44 2:26 421 No

Materiali:
//_/_/_

CST

2

GA 106 GG 364
A 1 GG 364
[10:23][20:07]



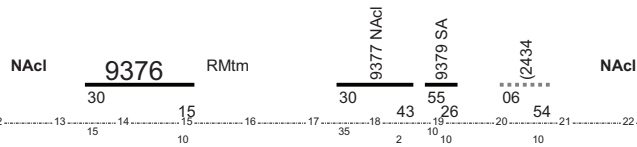
Lav Sct Km Not
9:44 2:26 421 No

Materiali:
//_/_/_

CT

3

GA 103 GG 364
A 1 GG 312
[13:15][21:04]



Lav Sct Km Not
7:49 3:29 491 No

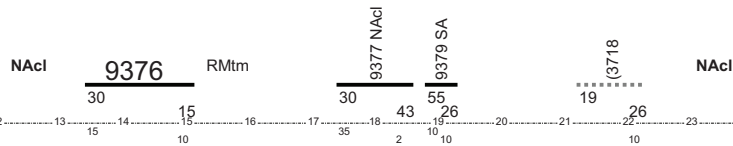
Materiali:
//_/_/_

CT - Domenica

Si effettua la Domenica

3

GA 103 GG 364
A 2 GG 52
[13:15][22:36]



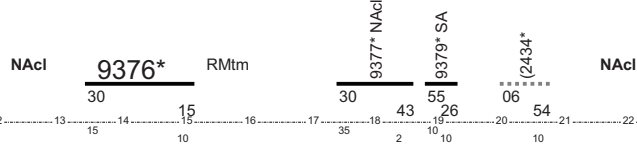
Lav Sct Km Not
9:21 3:29 491 No

Materiali:
//_/_/_

CST

4

GA 104 GG 364
A 1 GG 312
[13:15][21:04]



Lav Sct Km Not
7:49 3:29 491 No

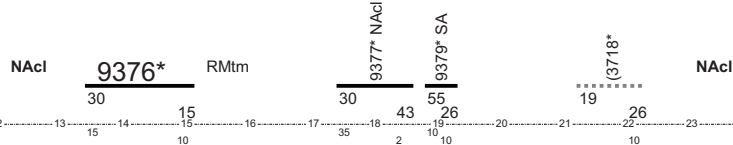
Materiali:
//_/_/_

CST-Domenica

Si effettua la Domenica

4

GA 104 GG 364
A 2 GG 52
[13:15][22:36]



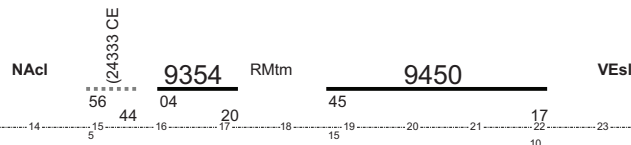
Lav Sct Km Not
9:21 3:29 491 No

Materiali:
//_/_/_

CT

5

GA 75 GG 364
A 1 GG 223
[14:51][22:27]



Lav Sct Km Not Rip
7:36 4:48 708 No 7:11

Lav Sct Km Not
7:12 5:01 724 No

Materiali:
//_/_/_

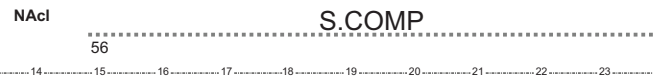
Cod. flessibilità: A2, /A2

Prefestivi

Si effettua i Prefestivi e giornalmente dal 28/7 al 18/8/12.

5

GA 75 GG 364
A 3 GG 78
[14:56][22:27]



Lav	Sct	Km	Not	Rip
7:31	0:00	0	No	7:11
Lav	Sct	Km	Not	
7:12	0:00	0	No	

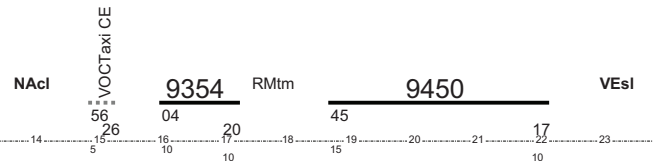
Materiali: / / / /

CT

Si effettua i Festivi e giornalmente dal 19/8 al 31/8 eccetto 25/12; 8/4; 2/6; 25/8; 8/12.

5

GA 75 GG 364
A 2 GG 63
[14:51][22:27]



Lav	Sct	Km	Not	Rip
7:36	4:48	708	No	7:11
Lav	Sct	Km	Not	
7:12	5:01	724	No	

Materiali: / / / /

Cod. flessibilità: A2, /A2

Continuazione CT

6

GA 75 GG 364
A 1 GG 223
[5:38][12:50]

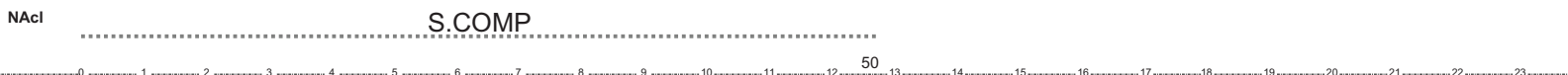


Materiali: / / / /

Continuazione Prefestivi

6

GA 75 GG 364
A 3 GG 78
[5:38][12:50]



Materiali: / / / /

Continuazione CT

6

GA 75 GG 364
A 2 GG 63
[5:38][12:50]

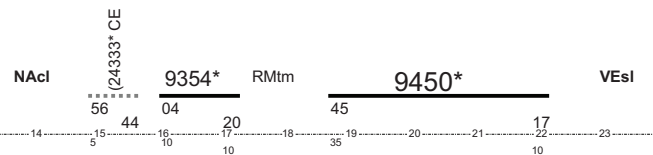


Materiali: / / / /

CST

7

GA 76 GG 364
A 1 GG 223
[14:51][22:27]



Lav	Sct	Km	Not	Rip
7:36	4:48	708	No	7:11
Lav	Sct	Km	Not	
7:12	5:01	724	No	

Materiali: / / / /

Cod. flessibilità: A2, /A2

CST-Prefestivi

Si effettua i Prefestivi e giornalmente dal 28/7 al 18/8/12.

7

GA 76 GG 364
A 3 GG 78
[14:56][22:27]



Lav	Sct	Km	Not	Rip
7:31	0:00	0	No	7:11
Lav	Sct	Km	Not	
7:12	0:00	0	No	

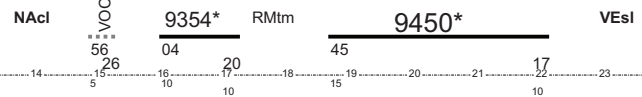
Materiali: / / / /

CST-Festivi

Si effettua i Festivi e giornalmente dal 19/8 al 31/8 eccetto 25/12; 8/4; 2/6; 25/8; 8/12.

7

GA 76 GG 364
A 2 GG 63
[14:51][22:27]



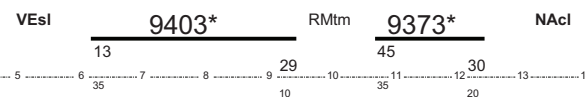
Lav	Sct	Km	Not	Rip
7:36	4:48	708	No	7:11
Lav	Sct	Km	Not	
7:12	5:01	724	No	

Materiali: _____
Cod. flessibilità: A2, /A2

Continuazione CST

8

GA 76 GG 364
A 1 GG 223
[5:38][12:50]



Materiali: _____

Continuazione CST-Prefestivi

8

GA 76 GG 364
A 3 GG 78 NAcI
[5:38][12:50]

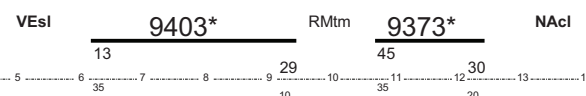


Materiali: _____

Continuazione CST-Festivi

8

GA 76 GG 364
A 2 GG 63
[5:38][12:50]



Materiali: _____

CT

1

GA 101 GG 364
A 1 GG 303
[8:11][15:27]



Lav Sct Km Not
7:16 4:24 543 No

Materiali:

___/___/___/___

CT-Festivi

Si effettua i Festivi.

1

GA 101 GG 364
A 2 GG 61
[8:11][16:35]



Lav Sct Km Not
8:24 1:59 271 No

Materiali:

___/___/___/___

CST

2

GA 102 GG 364
A 1 GG 303
[8:11][15:27]



Lav Sct Km Not
7:16 4:24 543 No

Materiali:

___/___/___/___

CST-Festivi

Si effettua i Festivi.

2

GA 102 GG 364
A 2 GG 61
[8:11][16:35]



Lav Sct Km Not
8:24 1:59 271 No

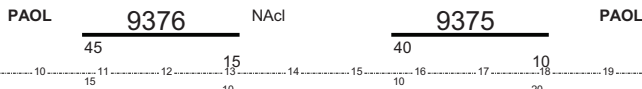
Materiali:

___/___/___/___

CT

3

GA 99 GG 364
A 1 GG 364
[10:30][18:30]



Lav Sct Km Not
8:00 5:00 543 No

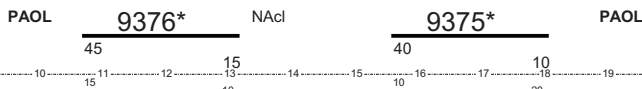
Materiali:

___/___/___/___

CST

4

GA 100 GG 364
A 1 GG 364
[10:30][18:30]



Lav Sct Km Not
8:00 5:00 543 No

Materiali:

___/___/___/___

CT

1

GA 93 GG 364
A 1 GG 303
[6:05][15:43]

RCcl 9372 PAOL

(723) Vls

RCcl

45

28

05

05

33

40

10

10

Si effettua i Festivi.

Lav Sct Km Not
9:38 1:38 177 No

Materiali:

___/___/___/___

CT-Festivi

1

GA 93 GG 364
A 2 GG 61
[6:05][14:45]

RCcl 9372 PAOL

(723) Vls

Vls

V.O.C.

V.O.C.

V.O.C.

V.O.C.

V.O.C.

V.O.C.

V.O.C.

V.O.C.

V.O.C.

V.O.C.

V.O.C.

V.O.C.

V.O.C.

V.O.C.

V.O.C.

V.O.C.

V.O.C.

V.O.C.

V.O.C.

V.O.C.

V.O.C.

V.O.C.

V.O.C.

V.O.C.

V.O.C.

V.O.C.

V.O.C.

V.O.C.

V.O.C.

V.O.C.

V.O.C.

V.O.C.

V.O.C.

V.O.C.

V.O.C.

V.O.C.

V.O.C.

V.O.C.

V.O.C.

V.O.C.

V.O.C.

V.O.C.

V.O.C.

V.O.C.

V.O.C.

V.O.C.

V.O.C.

V.O.C.

V.O.C.

V.O.C.

V.O.C.

V.O.C.

V.O.C.

Lav Sct Km Not
8:40 1:38 177 No

Materiali:

___/___/___/___

CST

2

GA 94 GG 364
A 1 GG 303
[6:05][15:43]

RCcl 9372* PAOL

(723*) Vls

Vls

V.O.C.

V.O.C.

V.O.C.

V.O.C.

V.O.C.

V.O.C.

V.O.C.

V.O.C.

V.O.C.

V.O.C.

V.O.C.

V.O.C.

V.O.C.

V.O.C.

V.O.C.

V.O.C.

V.O.C.

V.O.C.

V.O.C.

V.O.C.

V.O.C.

V.O.C.

V.O.C.

V.O.C.

V.O.C.

V.O.C.

V.O.C.

V.O.C.

V.O.C.

V.O.C.

V.O.C.

V.O.C.

V.O.C.

V.O.C.

V.O.C.

V.O.C.

V.O.C.

V.O.C.

V.O.C.

V.O.C.

V.O.C.

V.O.C.

V.O.C.

V.O.C.

V.O.C.

Lav Sct Km Not
9:38 1:38 177 No

Materiali:

___/___/___/___

CST-Festivi

Si effettua i Festivi.

2

GA 94 GG 364
A 2 GG 61
[6:05][14:45]

RCcl 9372* PAOL

(723*) Vls

Vls

V.O.C.

V.O.C.

V.O.C.

V.O.C.

V.O.C.

V.O.C.

V.O.C.

V.O.C.

V.O.C.

V.O.C.

V.O.C.

V.O.C.

V.O.C.

V.O.C.

V.O.C.

V.O.C.

V.O.C.

V.O.C.

V.O.C.

V.O.C.

V.O.C.

V.O.C.

V.O.C.

V.O.C.

V.O.C.

V.O.C.

V.O.C.

V.O.C.

V.O.C.

V.O.C.

V.O.C.

V.O.C.

V.O.C.

V.O.C.

V.O.C.

V.O.C.

Lav Sct Km Not
8:40 1:38 177 No

Materiali:

___/___/___/___

CT

3

GA 91 GG 364
A 1 GG 303
[8:15][17:25]

RCcl 9376 PAOL

9373 RCcl

55

42

10

05

40

10

20

Si effettua i Festivi.

Lav Sct Km Not
9:10 3:42 354 No

Materiali:

___/___/___/___

CT-Festivi

3

GA 91 GG 364
A 2 GG 61
[8:15][14:45]

RCcl 9376 PAOL

(723) Vls

Vls

V.O.C.

V.O.C.

V.O.C.

V.O.C.

V.O.C.

V.O.C.

V.O.C.

V.O.C.

V.O.C.

V.O.C.

V.O.C.

V.O.C.

V.O.C.

V.O.C.

V.O.C.

V.O.C.

V.O.C.

V.O.C.

V.O.C.

Lav Sct Km Not
6:30 1:47 177 No

Materiali:

___/___/___/___

CST

4

GA 92 GG 364
A 1 GG 303
[8:15][17:25]

RCcl 9376* PAOL

9373* RCcl

55

42

10

05

40

10

20

Lav Sct Km Not
9:10 3:42 354 No

Materiali:

___/___/___/___

SCST-Festivi Si effettua i Festivi.

4

GA 92 GG 364
A 2 GG 61
[8:15][14:45]



Lav Sct Km Not
6:30 1:47 177 No

Materiali:

___/___/___/___

CT

5

GA 97 GG 364
A 1 GG 303
[13:15][20:25]



Lav Sct Km Not
7:10 3:39 354 No

Materiali:

___/___/___/___

CT-Prefestivi. Si effettua Prefestivi.

5

GA 97 GG 364
A 2 GG 61
[14:45][20:25]



Lav Sct Km Not
5:40 1:52 177 No

Materiali:

___/___/___/___

CST

6

GA 98 GG 364
A 1 GG 303
[13:15][20:25]



Lav Sct Km Not
7:10 3:39 354 No

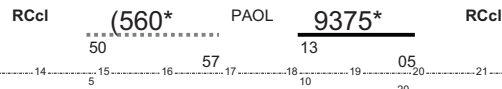
Materiali:

___/___/___/___

CST-Prefestivi Si effettua Prefestivi.

6

GA 98 GG 364
A 2 GG 61
[14:45][20:25]



Lav Sct Km Not
5:40 1:52 177 No

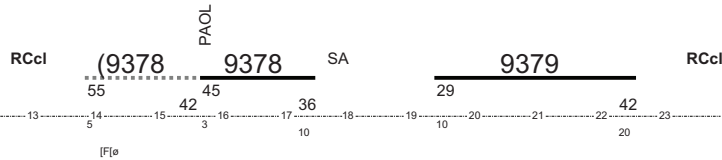
Materiali:

___/___/___/___

CT

7

GA 95 GG 364
A 1 GG 303
[13:50][23:02]



Lav Sct Km Not
9:12 5:04 611 No

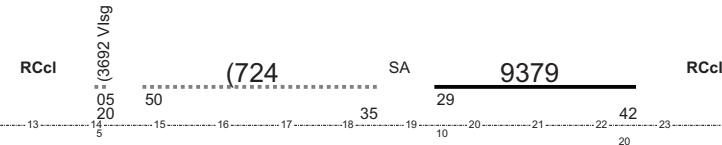
Materiali:

___/___/___/___

CT-Prefestivi Si effettua i Prefestivi, eccetto 25/12; 8/4; 2/6; 8/12/12.

7

GA 95 GG 364
A 2 GG 57
[14:00][23:02]



Lav Sct Km Not
9:02 3:13 394 No

Materiali:

___/___/___/___

CT PF=F

Si effettua i Prefestivi. eccetto 25/12; 8/4; 2/6; 8/12/12.

7

GA 95 GG 364
A 3 GG 4
[14:10][23:02]

RCcl

*V.O.C. V/sg

(724

SA

9379

RCcl

Lav Sct Km Not
8:52 3:13 394 No

Materiali:

___/___/___/___

CST

8

GA 96 GG 364
A 1 GG 303
[13:50][23:02]

RCcl

PAOL

(9378*

9378*

SA

9379*

RCcl

Lav Sct Km Not
9:12 5:04 611 No

Materiali:

___/___/___/___

CST-Prefestivi

Si effettua i Prefestivi.

8

GA 96 GG 364
A 2 GG 57
[14:00][23:02]

RCcl

[Flø

3692 V/sg

(724*

SA

9379*

RCcl

Lav Sct Km Not
9:02 3:13 394 No

Materiali:

___/___/___/___

CST-2/6 e 8/12

Si effettua il 25/12; 8/4; 2/6; 8/12/12.

8

GA 96 GG 364
A 3 GG 4
[14:00][23:02]

RCcl

V.O.C. V/sg

(724*

SA

9379*

RCcl

Lav Sct Km Not
9:02 3:13 394 No

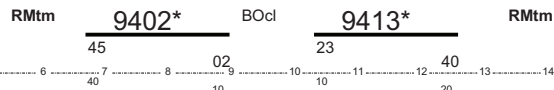
Materiali:

___/___/___/___

CST

1

GA 2 GG 364
A 1 GG 364
[6:05][13:00]



Lav Sct Km Not
6:55 4:34 705 No

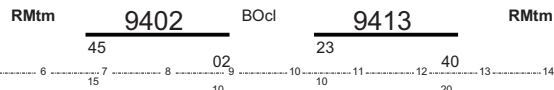
Materiali:

___/___/___/___

CT

2

GA 1 GG 364
A 1 GG 364
[6:30][13:00]



Lav Sct Km Not
6:30 4:34 705 No

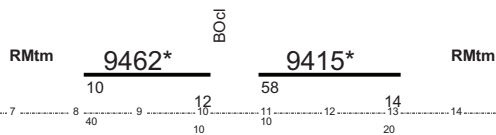
Materiali:

___/___/___/___

CST

3

GA 4 GG 364
A 1 GG 364
[7:30][13:34]



Lav Sct Km Not
6:04 4:18 703 No

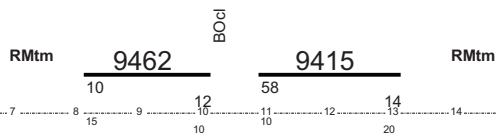
Materiali:

___/___/___/___

CT

4

GA 3 GG 364
A 1 GG 364
[7:55][13:34]



Lav Sct Km Not
5:39 4:18 703 No

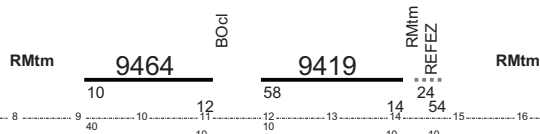
Materiali:

___/___/___/___

CT

5

GA 5 GG 364
A 1 GG 364
[8:30][15:04]



Lav Sct Km Not
6:34 4:18 703 No

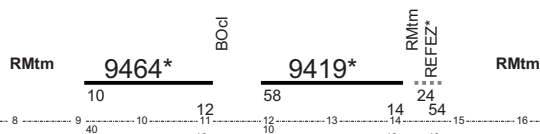
Materiali:

___/___/___/___

CST

6

GA 6 GG 364
A 1 GG 364
[8:30][15:04]



Lav Sct Km Not
6:34 4:18 703 No

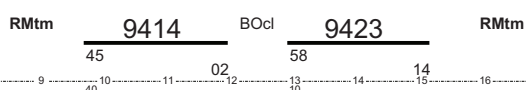
Materiali:

___/___/___/___

CT

7

GA 7 GG 364
A 1 GG 364
[9:05][15:34]



Lav Sct Km Not
6:29 4:33 705 No

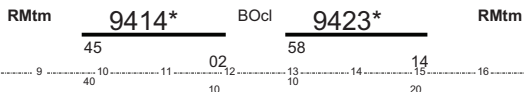
Materiali:

___/___/___/___

CST

8

GA 8 GG 364
A 1 GG 364
[9:05][15:34]



Lav Sct Km Not
6:29 4:33 705 No

Materiali:

//_/

CT

9

GA 9 GG 364
A 1 GG 364
[9:30][18:34]



Lav Sct Km Not
9:04 4:18 703 No

Materiali:

//_/

CST

10

GA 10 GG 364
A 1 GG 364
[9:30][18:34]



Lav Sct Km Not
9:04 4:18 703 No

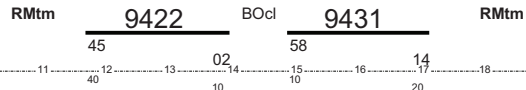
Materiali:

//_/

CT

11

GA 11 GG 364
A 1 GG 364
[11:05][17:34]



Lav Sct Km Not
6:29 4:33 705 No

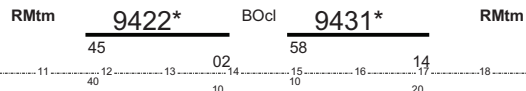
Materiali:

//_/

CST

12

GA 12 GG 364
A 1 GG 364
[11:05][17:34]



Lav Sct Km Not
6:29 4:33 705 No

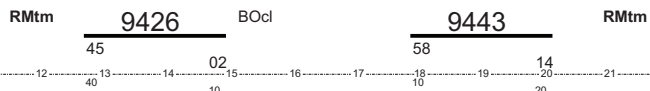
Materiali:

//_/

CT

13

GA 13 GG 364
A 1 GG 364
[12:05][20:34]



Lav Sct Km Not
8:29 4:33 705 No

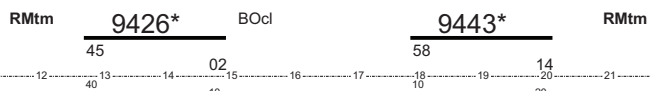
Materiali:

//_/

CST

14

GA 14 GG 364
A 1 GG 364
[12:05][20:34]



Lav Sct Km Not
8:29 4:33 705 No

Materiali:

//_/

CT

15

GA 15 GG 364
A 1 GG 364
[13:05][21:00]



Lav Sct Km Not
7:55 4:34 705 No

Materiali:



CST

16

GA 16 GG 364
A 1 GG 364
[13:05][21:00]



Lav Sct Km Not
7:55 4:34 705 No

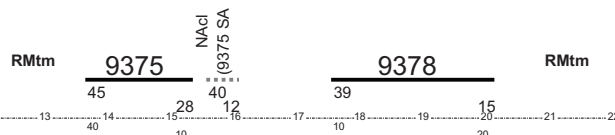
Materiali:



CT

17

GA 107 GG 364
A 1 GG 303
[13:05][20:35]



Lav Sct Km Not
7:30 4:19 483 No

Materiali:

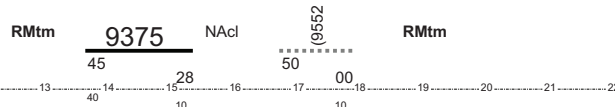


CT-Prefestivi

Si effettua i Prefestivi.

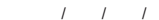
17

GA 107 GG 364
A 2 GG 61
[13:05][18:10]



Lav Sct Km Not
5:05 1:43 214 No

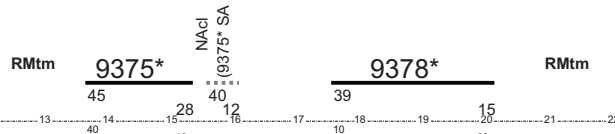
Materiali:



CST

18

GA 108 GG 364
A 1 GG 303
[13:05][20:35]



Lav Sct Km Not
7:30 4:19 483 No

Materiali:

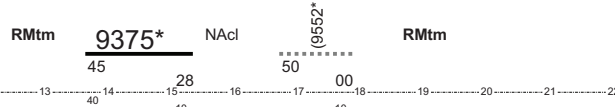


CST-Prefestivi

Si effettua i Prefestivi.

18

GA 108 GG 364
A 2 GG 61
[13:05][18:10]



Lav Sct Km Not
5:05 1:43 214 No

Materiali:



CT

19

GA 17 GG 364
A 1 GG 364
[14:05][21:10]



Lav Sct Km Not
7:05 4:19 703 No

Materiali:



CST

20

GA 18 GG 364
A 1 GG 364
[14:05][21:10]



Lav	Sct	Km	Not
7:05	4:19	703	No

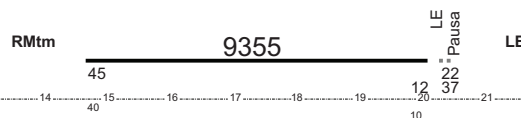
Materiali:

___/___/___/___

CT

21

GA 87 GG 364
A 1 GG 364
[14:05][20:37]



Lav	Sct	Km	Not	Rip
6:32	5:27	630	No	8:33

Lav	Sct	Km	Not
6:49	5:39	630	No

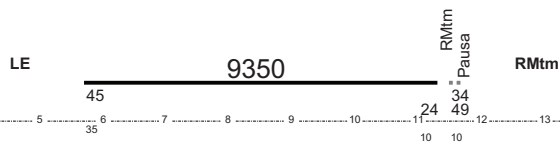
Materiali:

___/___/___/___

Continuazione CT

22

GA 87 GG 364
A 1 GG 364
[5:10][11:59]



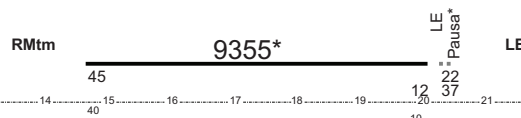
Materiali:

___/___/___/___

CT

23

GA 88 GG 364
A 1 GG 364
[14:05][20:37]



Lav	Sct	Km	Not	Rip
6:32	5:27	630	No	8:33

Lav	Sct	Km	Not
6:49	5:39	630	No

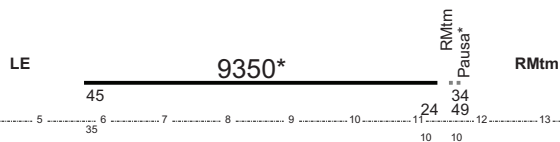
Materiali:

___/___/___/___

Continuazione CT

24

GA 88 GG 364
A 1 GG 364
[5:10][11:59]



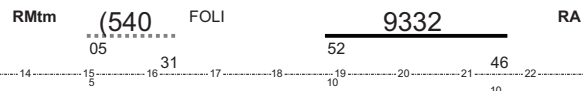
Materiali:

___/___/___/___

CT

25

GA 113 GG 364
A 1 GG 364
[15:00][21:56]



Lav	Sct	Km	Not	Rip
6:56	2:54	254	No	7:36

Lav	Sct	Km	Not
5:12	4:17	403	No

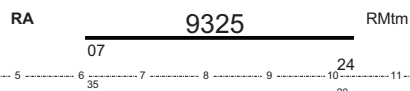
Materiali:

___/___/___/___

Continuazione CT

26

GA 113 GG 364
A 1 GG 364
[5:32][10:44]



Materiali:

___/___/___/___

CST

27

GA 114 GG 364
A 1 GG 364
[15:00][21:56]

RMtm (540* FOLI 9332* RA
05 31 52 46
5 10

Continuazione
CST

28

GA 114 GG 364
A 1 GG 364
[5:32][10:44]

RA 9325* RMtm
07 24
35 20

CT

29

GA 19 GG 364
A 1 GG 364
[15:05][21:34]

RMtm 9438 BOcl 9447 RMtm
45 02 58 14
40 10 10 20

CST

30

GA 20 GG 364
A 1 GG 364
[15:05][21:34]

RMtm 9438* BOcl 9447* RMtm
45 02 58 14
40 10 10 20

CT

31

GA 21 GG 364
A 1 GG 364
[15:30][20:58]

RMtm 9478 BZ
10 48
40 10

Continuazione CT

32

GA 21 GG 364
A 1 GG 364
[6:25][12:10]

BZ 9465 RMtm
00 50
35 20

CST

33

GA 22 GG 364
A 1 GG 364
[15:30][20:58]

RMtm 9478* BZ
10 48
40 10

Lav Sct Km Not Rip
6:56 2:54 254 No 7:36
Lav Sct Km Not
5:12 4:17 403 No
Materiali:

Materiali:
/ / / /

Lav Sct Km Not
6:29 4:33 705 No

Materiali:
/ / / /

Lav Sct Km Not
6:29 4:33 705 No

Materiali:
/ / / /

Lav Sct Km Not Rip
5:28 4:38 612 No 9:27

Lav Sct Km Not
5:45 4:50 612 No
Materiali:

/ / / /

Materiali:
/ / / /

Lav Sct Km Not Rip
5:28 4:38 612 No 9:27

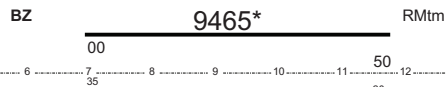
Lav Sct Km Not
5:45 4:50 612 No
Materiali:

/ / / /

Continuazione CST

34

GA 22 GG 364
A 1 GG 364
[6:25][12:10]

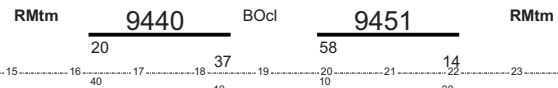


Materiali: _____

CT

35

GA 25 GG 364
A 1 GG 364
[15:40][22:34]



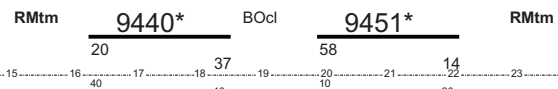
Lav Sct Km Not
6:54 4:33 705 No

Materiali: _____

CST

36

GA 26 GG 364
A 1 GG 364
[15:40][22:34]



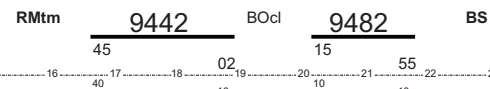
Lav Sct Km Not
6:54 4:33 705 No

Materiali: _____

CT

37

GA 23 GG 364
A 1 GG 364
[16:05][22:05]



Lav Sct Km Not Rip
6:00 3:57 532 No 8:25

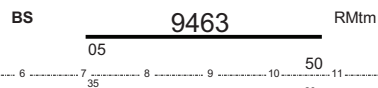
Lav Sct Km Not
4:40 3:45 530 No

Materiali: _____

Continuazione CT

38

GA 23 GG 364
A 1 GG 364
[6:30][11:10]

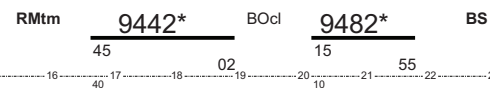


Materiali: _____

CST

39

GA 24 GG 364
A 1 GG 364
[16:05][22:05]



Lav Sct Km Not Rip
6:00 3:57 532 No 8:25

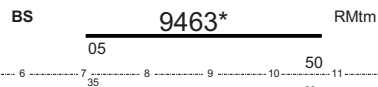
Lav Sct Km Not
4:40 3:45 530 No

Materiali: _____

Continuazione CST

40

GA 24 GG 364
A 1 GG 364
[6:30][11:10]

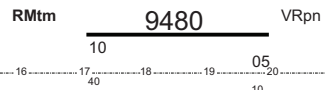


Materiali: _____

CT

41

GA 27 GG 364
A 1 GG 364
[16:30][20:15]



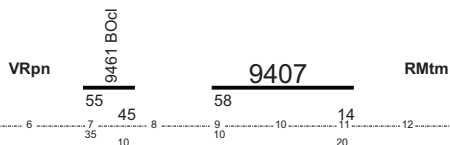
Lav	Sct	Km	Not	Rip
3:45	2:55	466	No	10:05
Lav	Sct	Km	Not	
5:14	3:06	468	No	

Materiali: _____

Continuazione CT

42

GA 27 GG 364
A 1 GG 364
[6:20][11:34]

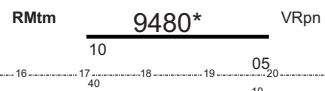


Materiali: _____

CST

43

GA 28 GG 364
A 1 GG 364
[16:30][20:15]



Lav	Sct	Km	Not	Rip
3:45	2:55	466	No	10:05
Lav	Sct	Km	Not	
5:14	3:06	468	No	

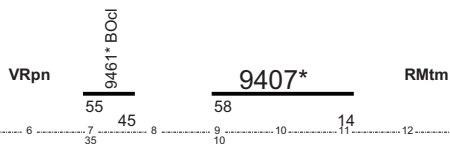
Materiali: _____

Continuazione

CST

44

GA 28 GG 364
A 1 GG 364
[6:20][11:34]

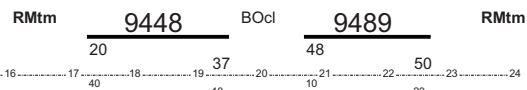


Materiali: _____

CT

45

GA 29 GG 364
A 1 GG 364
[16:40][23:10]

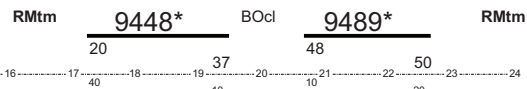


Materiali: _____

CST

46

GA 30 GG 364
A 1 GG 364
[16:40][23:10]



Materiali: _____

CT

47

GA 109 GG 364
A 1 GG 303
[16:45][22:36]



Materiali: _____

CT-Festivi Si effettua i Festivi.

47

GA 109 GG 364
A 2 GG 61
[16:45][22:36]



Lav	Sct	Km	Not
5:51	1:25	150	No

Materiali:



CST

48

GA 110 GG 364
A 1 GG 303
[16:45][22:36]



Lav	Sct	Km	Not
5:51	1:25	150	No

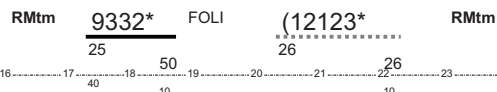
Materiali:



CST-Festivi Si effettua i Festivi.

48

GA 110 GG 364
A 2 GG 61
[16:45][22:36]



Lav	Sct	Km	Not
5:51	1:25	150	No

Materiali:

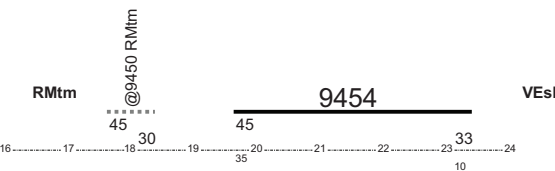


CT

Riserva Roma T.ni per ACCESSORI PARTENZA treno 9450 dalle ore 17.45 alle 18.30

49

GA 31 GG 364
A 1 GG 286
[17:45][23:43]



Lav	Sct	Km	Not	Rip
5:58	3:48	512	No	8:09

Lav	Sct	Km	Not
4:42	3:47	512	No

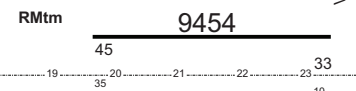
Materiali:



CT-Prefestivi Si effettua i Prefestivi e giornalmente dal 28/7 al 18/8/12.

49

GA 31 GG 364
A 2 GG 78
[19:10][23:43]



Lav	Sct	Km	Not	Rip
4:33	3:48	512	No	8:09

Lav	Sct	Km	Not
4:42	3:47	512	No

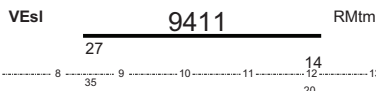
Materiali:



Continuazione CT

50

GA 31 GG 364
A 1 GG 286
[7:52][12:34]



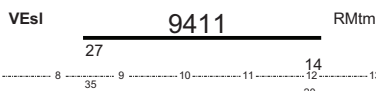
Materiali:



Continuazione CT -Prefestivi

50

GA 31 GG 364
A 2 GG 78
[7:52][12:34]



Materiali:



CST Riserva Roma T.ni per ACCESSORI PARTENZA treno 9450 dalle ore 17.45 alle 18.30

51

GA 32 GG 364
A 1 GG 286
[17:45][23:43]

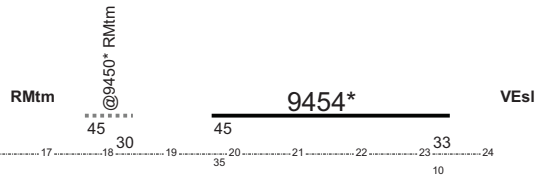


Table with columns: Lav, Sct, Km, Not, Rip. Values: 5:58, 3:48, 512, No, 8:09.

Materiali: / / / /

CST-Prefestivi Si effettua i Prefestivi e giornalmente dal 28/7 al 18/8/12.

51

GA 32 GG 364
A 2 GG 78
[19:10][23:43]

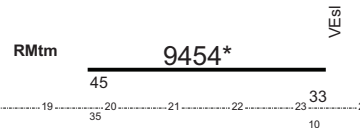


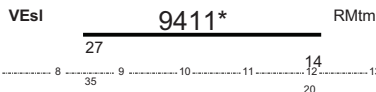
Table with columns: Lav, Sct, Km, Not, Rip. Values: 4:33, 3:48, 512, No, 8:09.

Materiali: / / / /

Continuazione CST

52

GA 32 GG 364
A 1 GG 286
[7:52][12:34]

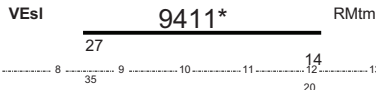


Materiali: / / / /

Continuazione CST-Prefestivi

52

GA 32 GG 364
A 2 GG 78
[7:52][12:34]



Materiali: / / / /

CT-Prefestivi Si effettua Prefestivi e giorni 29/7; 5/8; 12/8/12.

53

GA 117 GG 74
A 2 GG 60
[11:55][17:40]

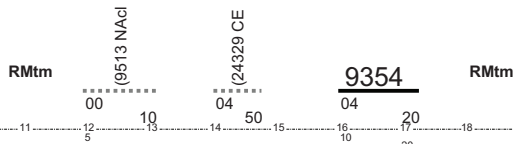


Table with columns: Lav, Sct, Km, Not. Values: 5:45, 1:16, 198, No.

Materiali: / / / /

CT - Agosto Si effettua giornalmente dal 30/7 al 18/8/12 eccetto 5 e 12/8/12.

53

GA 117 GG 74
A 1 GG 14
[10:05][17:40]

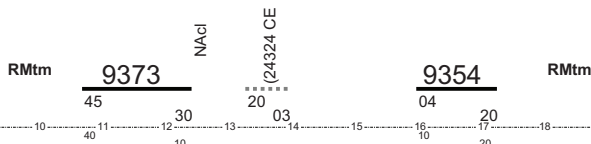


Table with columns: Lav, Sct, Km, Not. Values: 7:35, 3:01, 412, No.

Materiali: / / / /

CST-Prefestivi Si effettua Prefestivi e giorni 29/7; 5/8; 12/8/12.

54

GA 118 GG 73
A 2 GG 57
[11:55][17:40]

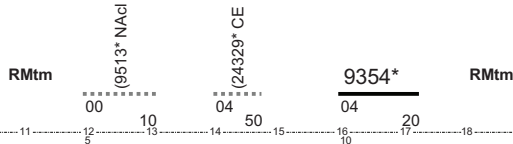


Table with columns: Lav, Sct, Km, Not. Values: 5:45, 1:16, 198, No.

Materiali: / / / /

CST - Agosto

Si effettua dal 30/7 al 19/8/12 eccetto 5/8; 12/8/12.

54

GA 118 GG 73
A 1 GG 16

[10:05][17:40]

RMtrn

9373*

NACI

(24324* CE

9354*

RMtrn

45

30

20

03

04

20

0 1 2 3 4 5 6 7 8 9 10 11 12 13 14 15 16 17 18 19 20 21 22 23 24

Lav Sct Km Not
7:35 3:01 412 No

Materiali:

___/___/___/___

CT

1

GA 33 GG 364
A 1 GG 364
[4:04][10:53]

VEsI

V.O.C.*VErm
-VOCBus*MScl

9401

BOcl

9402

VEsI

09 19
19 34

39 55

05 33

5 10

35 10

9 10 10 20

Lav Sct Km Not
6:49 2:44 311 Si

Materiali:

___/___/___/___

CST

2

GA 34 GG 364
A 1 GG 364
[4:04][10:53]

VEsI

V.O.C.*VErm
-VOCBus*MScl

9401*

BOcl

9402*

VEsI

09 19
19 34

39 55

05 33

5 10

35 10

9 10 10 20

Lav Sct Km Not
6:49 2:44 311 Si

Materiali:

___/___/___/___

CT

3

GA 35 GG 364
A 1 GG 364
[6:13][14:53]

VEsI

6803 MScl
-VOCF5*MSif

9415

BOcl

9418

VEsI

18 40
29 50

47 59

27 55

05 33

5 10

8 10

9 10 10 20

Lav Sct Km Not
8:40 3:08 327 No

Materiali:

___/___/___/___

CST

4

GA 36 GG 364
A 1 GG 364
[6:13][14:53]

VEsI

6803* MScl
-VOCF5* MSif

9415*

BOcl

9418*

VEsI

18 40
29 50

44 55

27 55

05 33

5 10

8 10

9 10 10 20

Lav Sct Km Not
8:40 3:07 327 No

Materiali:

___/___/___/___

CT

5

GA 37 GG 364
A 1 GG 364
[8:17][12:53]

VEsI

9413

BOcl

9410

VEsI

57 20

05 33

9 10

10 20

Lav Sct Km Not
4:36 2:51 319 No

Materiali:

___/___/___/___

CST

6

GA 38 GG 364
A 1 GG 364
[8:17][12:53]

VEsI

9413*

BOcl

9410*

VEsI

57 20

05 33

9 10

10 20

Lav Sct Km Not
4:36 2:51 319 No

Materiali:

___/___/___/___

CT

7

GA 39 GG 364
A 1 GG 364
[9:47][19:43]

VEsI

9419

BOcl

9416

VEsI

9439

BOcl

(9438

VEsI

27 55

40 03

27 55

05 33

10 10

10 10

10 10

10 10

Lav Sct Km Not
9:56 4:19 479 No

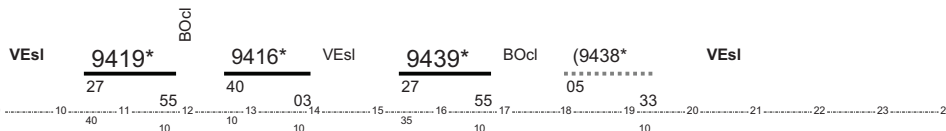
Materiali:

___/___/___/___

CST

8

GA 40 GG 364
A 1 GG 364
[9:47][19:43]



Lav Sct Km Not
9:56 4:19 479 No

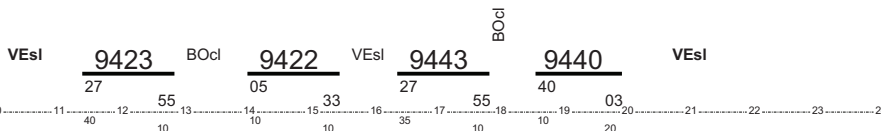
Materiali:

___/___/___/___

CT

9

GA 41 GG 364
A 1 GG 364
[10:47][20:23]



Lav Sct Km Not
9:36 5:47 638 No

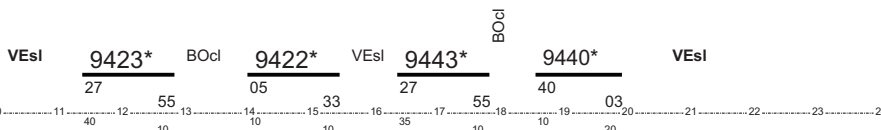
Materiali:

___/___/___/___

CST

10

GA 42 GG 364
A 1 GG 364
[10:47][20:23]



Lav Sct Km Not
9:36 5:47 638 No

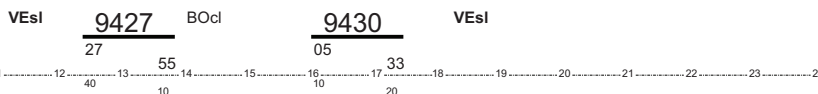
Materiali:

___/___/___/___

CT

11

GA 43 GG 364
A 1 GG 364
[11:47][17:53]



Lav Sct Km Not
6:06 2:56 319 No

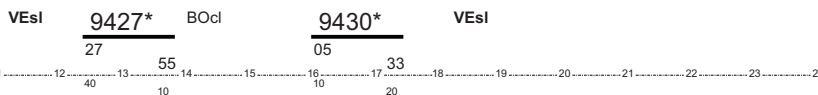
Materiali:

___/___/___/___

CST

12

GA 44 GG 364
A 1 GG 364
[11:47][17:53]



Lav Sct Km Not
6:06 2:56 319 No

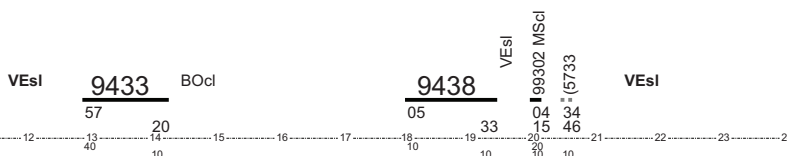
Materiali:

___/___/___/___

CT

13

GA 53 GG 364
A 1 GG 364
[12:17][20:56]



Lav Sct Km Not
8:39 3:02 327 No

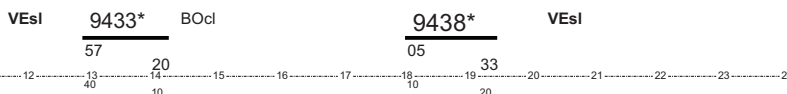
Materiali:

___/___/___/___

CST

14

GA 54 GG 364
A 1 GG 364
[12:17][19:53]



Lav Sct Km Not
7:36 2:51 319 No

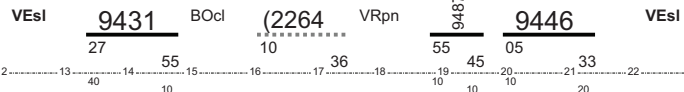
Materiali:

___/___/___/___

CT

15

GA 47 GG 364
A 1 GG 364
[12:47][21:53]



Lav Sct Km Not
9:06 3:46 434 No

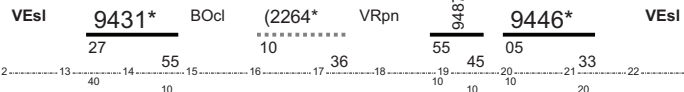
Materiali:



CST

16

GA 48 GG 364
A 1 GG 364
[12:47][21:53]



Lav Sct Km Not
9:06 3:46 434 No

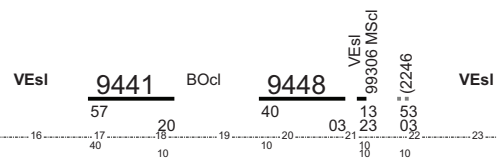
Materiali:



CT

17

GA 45 GG 364
A 1 GG 364
[16:17][22:13]



Lav Sct Km Not
5:56 2:56 327 No

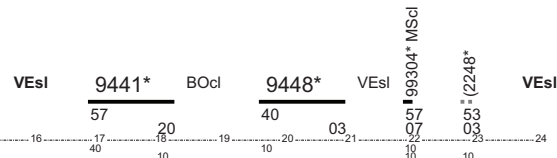
Materiali:



CST

18

GA 46 GG 364
A 1 GG 364
[16:17][23:13]



Lav Sct Km Not
6:56 2:56 327 No

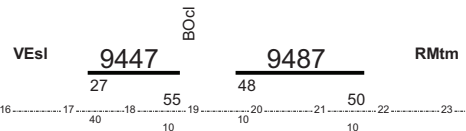
Materiali:



CT

19

GA 49 GG 364
A 1 GG 364
[16:47][22:00]



Lav Sct Km Not Rip
5:13 3:30 510 No 9:10

Lav Sct Km Not
4:43 3:48 512 No

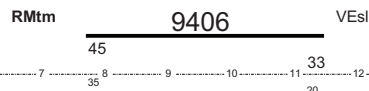
Materiali:



Continuazione CT

20

GA 49 GG 364
A 1 GG 364
[7:10][11:53]



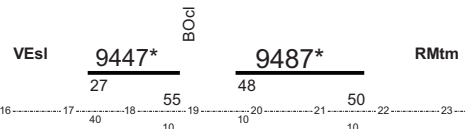
Materiali:



CST

21

GA 50 GG 364
A 1 GG 364
[16:47][22:00]



Lav Sct Km Not Rip
5:13 3:30 510 No 9:10

Lav Sct Km Not
4:43 3:48 512 No

Materiali:



**Continuazione
CST**

22

GA 50 GG 364
A 1 GG 364
[7:10][11:53]

RMtm 9406* VEsl

45 33
35 20

Materiali:

_____/_____/_____/_____

CT

23

GA 51 GG 364
A 1 GG 364
[17:47][23:24]

VEsl 9451 BOcl 9455 RMtm

27 55 58 14
40 10 10 10

Lav Sct Km Not Rip
5:37 3:44 512 No 8:21

Lav Sct Km Not
4:38 3:43 512 No

Materiali:

_____/_____/_____/_____

Continuazione CT

24

GA 51 GG 364
A 1 GG 364
[7:45][12:23]

RMtm 9408 VEsl

20 03
35 20

Materiali:

_____/_____/_____/_____

CST

25

GA 52 GG 364
A 1 GG 364
[17:47][23:24]

VEsl 9451* BOcl 9455* RMtm

27 55 58 14
40 10 10 10

Lav Sct Km Not Rip
5:37 3:44 512 No 8:21

Lav Sct Km Not
4:38 3:43 512 No

Materiali:

_____/_____/_____/_____

**Continuazione
CST**

26

GA 52 GG 364
A 1 GG 364
[7:45][12:23]

RMtm 9408* VEsl

20 03
35 20

Materiali:

_____/_____/_____/_____